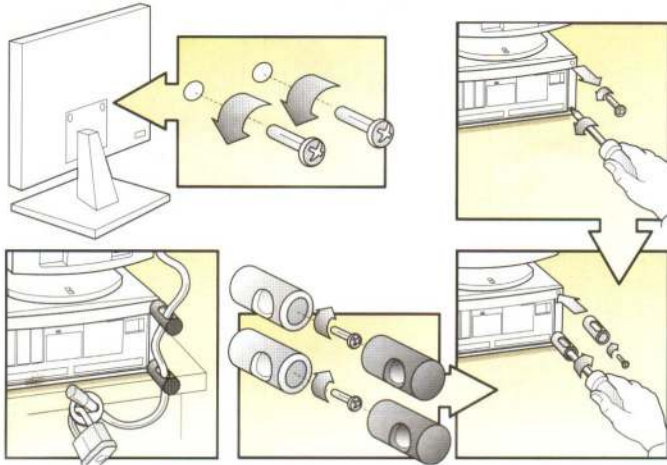
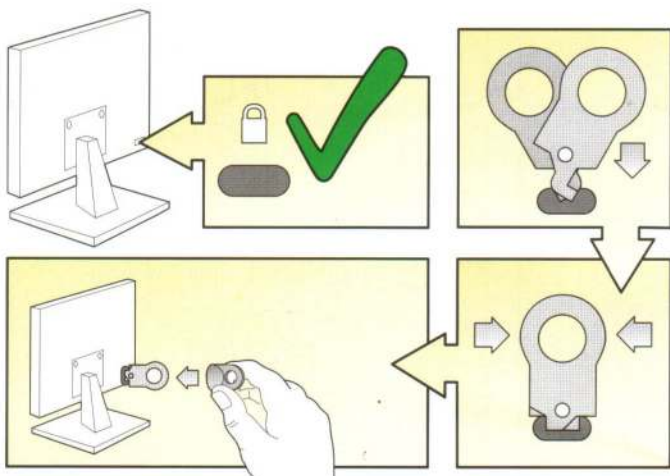


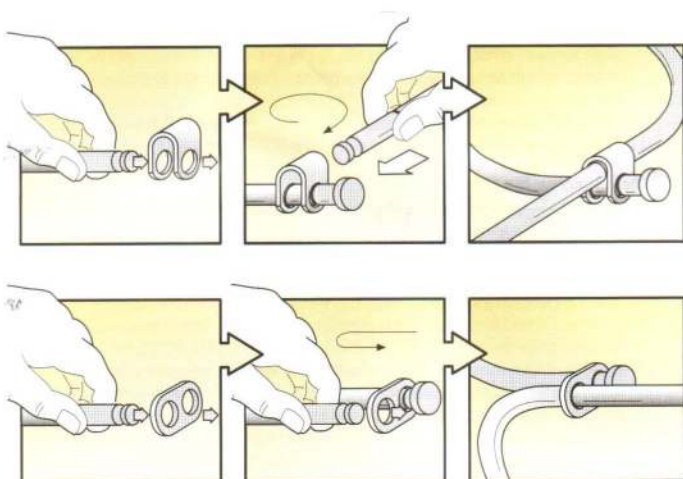
UniLock®



SecuClip®



Cable Trap®



COMPUTER SECURITY

Universal installation instruction manual

COMPUTER SECURITY
MADE EASY



www.secuplus.co.za



SecuPlus Branches

Gauteng
Tel : +27 12 345 2420
Fax: +27 12 345 2642

Western Cape
Cell: 082 887 6726

KwaZuluNatal
Tel : +27 31 708 3447
Fax: +27 86 577 3803

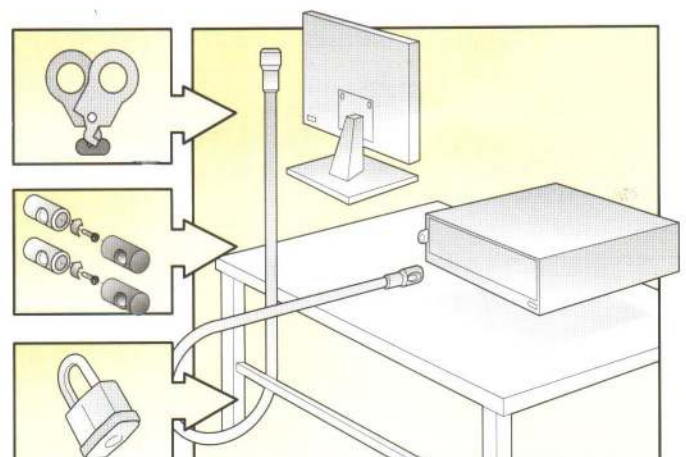
P.O. Box 1379
Wingate Park
0153
South Africa

P.O. Box 62
Somerset Mall
7137
South Africa

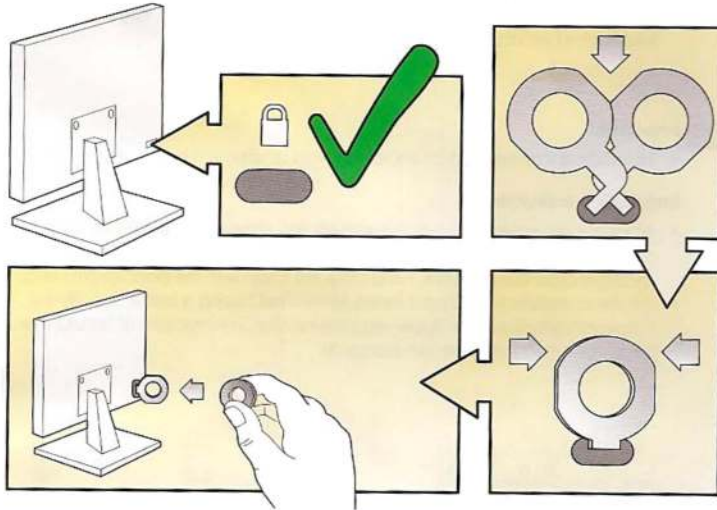
P.O. Box 280
Sarnia
3615
South Africa

www.secuplus.co.za

PC-Kit®



SecuClip Pro®

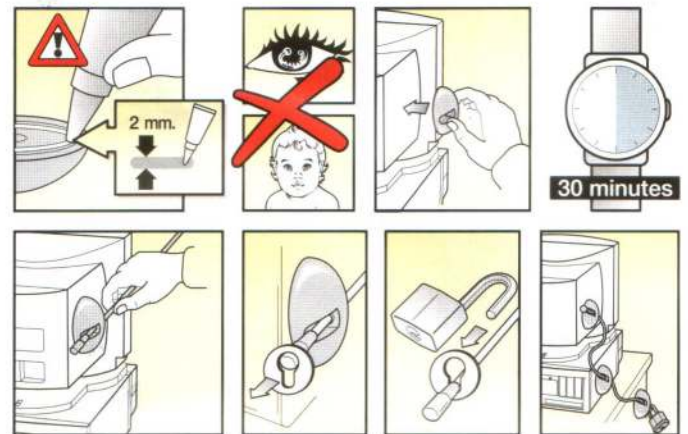


Products

SecuClip
SecuClip Pro
UniLock
PC-Lock
CableTrap
PC-Kit
SecuClipper

SecuPlate
SecurityCable
Secukit Proline
Secukit XL
UniKit
CompuLock
SecuSaver

SecuPlate® SecuKit® XS, XL, & Proline



Important

- The cyanoacrylate glue in this package bonds skin and eyelids in seconds. Keep out of reach of children!
- Turn off equipment before starting installation.
- The rubber security plates are designed for use on most kinds of plastics, metal and painted surfaces. Affix them on a solid and flat surface. Do not block ventilation holes, screws or movable parts!

Prepare Installation

- Prepare the rubber security plates for bonding by rubbing the surface of the rubber plates with the rubbing pad provided. Dust with a clean cloth. Clean these surfaces with the alcohol supplied and let them dry for at least 15 minutes!
- Select suitable locations for the security plates. Rub the surfaces of these locations with the rubbing pad provided. Dust with a clean cloth. Clean these surfaces with the alcohol supplied and let them dry for at least 15 minutes!

Installation Instruction

- Remove the cap of the tube of adhesive. Carefully puncture the top and replace cap.
- Apply 7mm. from the edge a thin circular bead (1-2mm) of the adhesive on one (1) plate. Place the plate on the prepared surface and apply firm pressure to the plate for at least 1 minute. Repeat this for the other plates. Wait at least 30 minutes before feeding the cable through the security plates. Do this very carefully with minimal tension (twirl the cable while putting it through the security plates) because the maximum bonding strength is only reached after 24 hours. Secure the cable to the work surface by either wrapping it around a table leg or using one of the security plates as an anchoring point.

